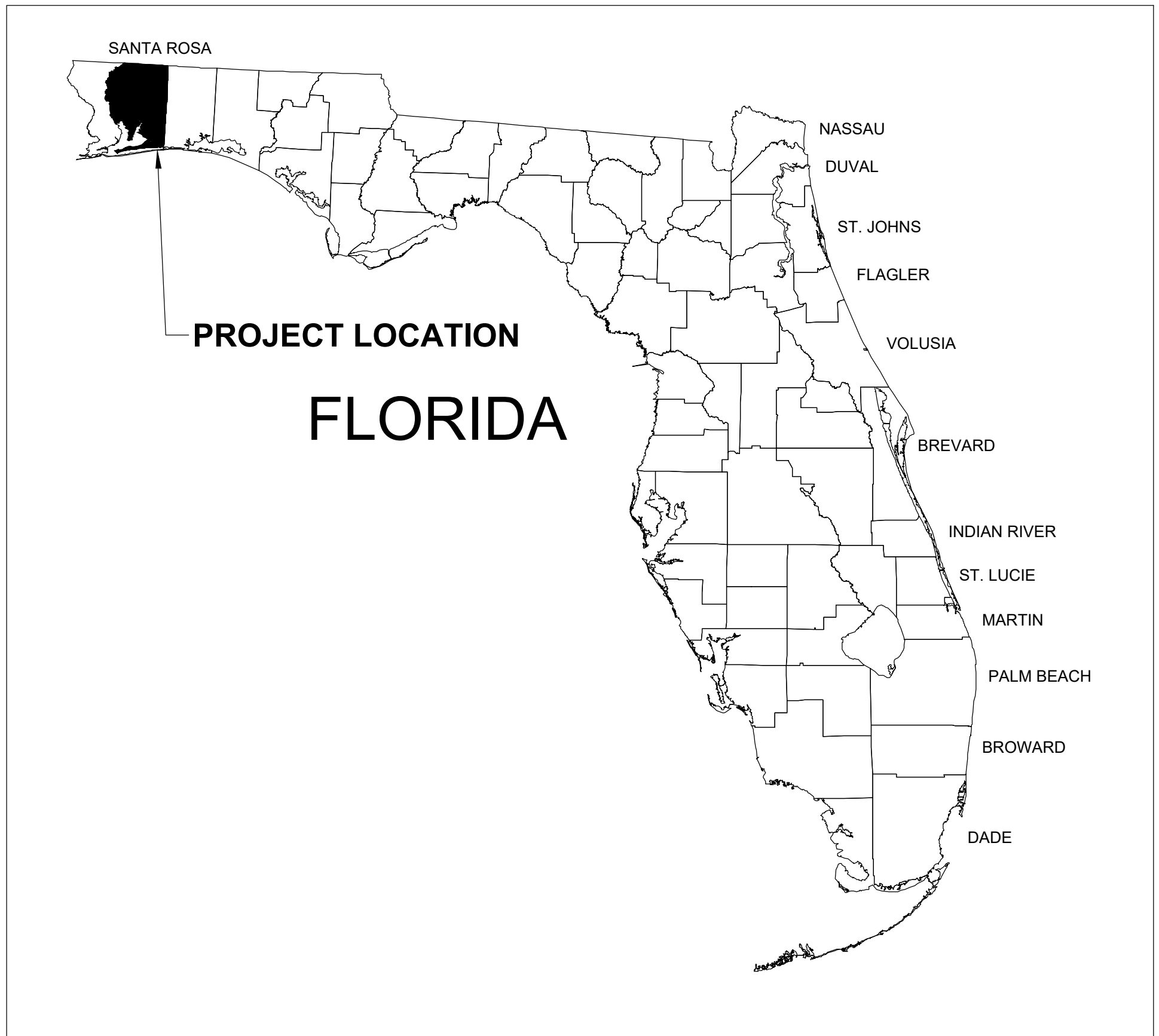


SR-27 ARTIFICIAL REEF CONSTRUCTION PROJECT

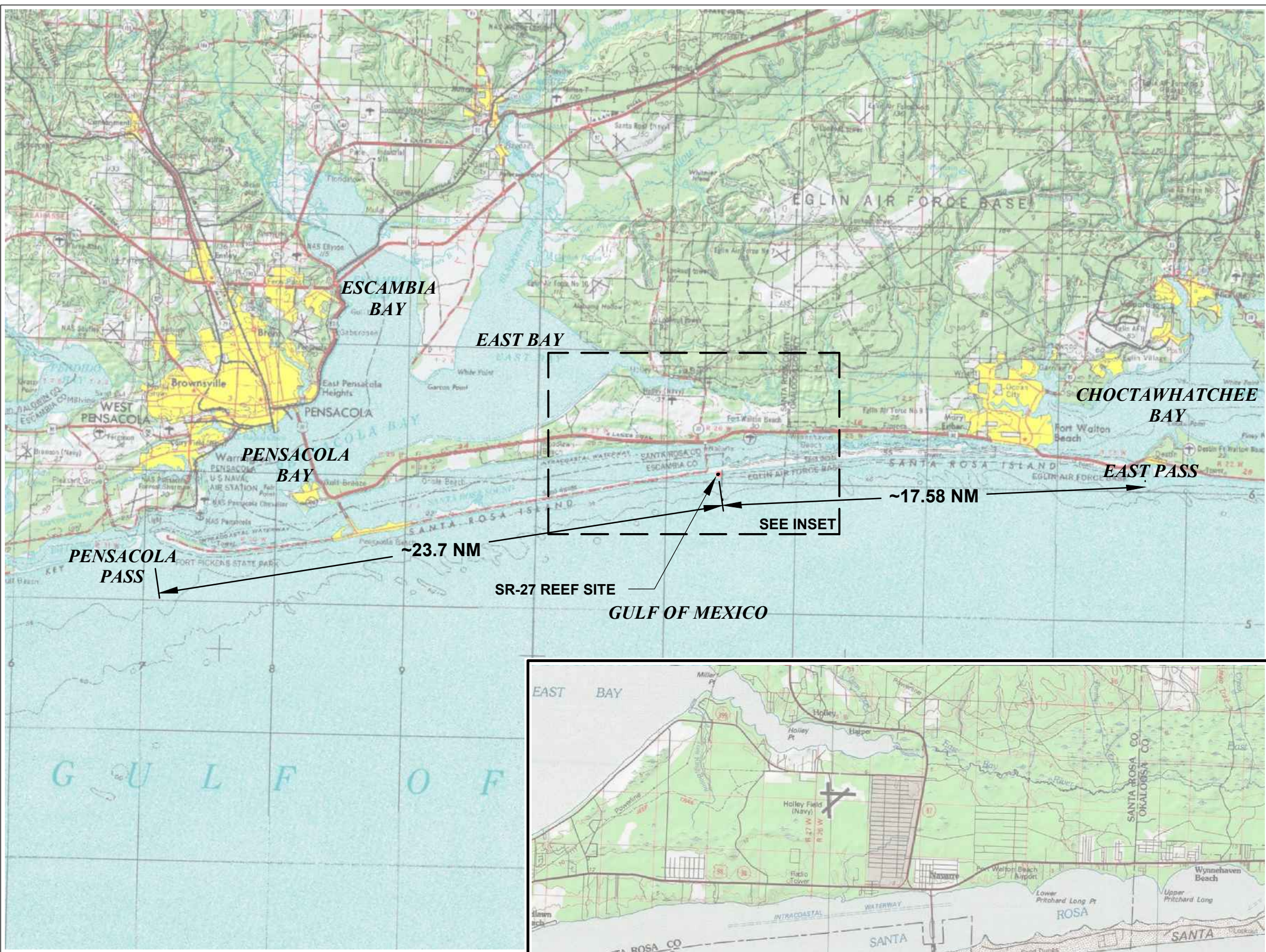
FWC GRANT #15154

SANTA ROSA COUNTY, FLORIDA



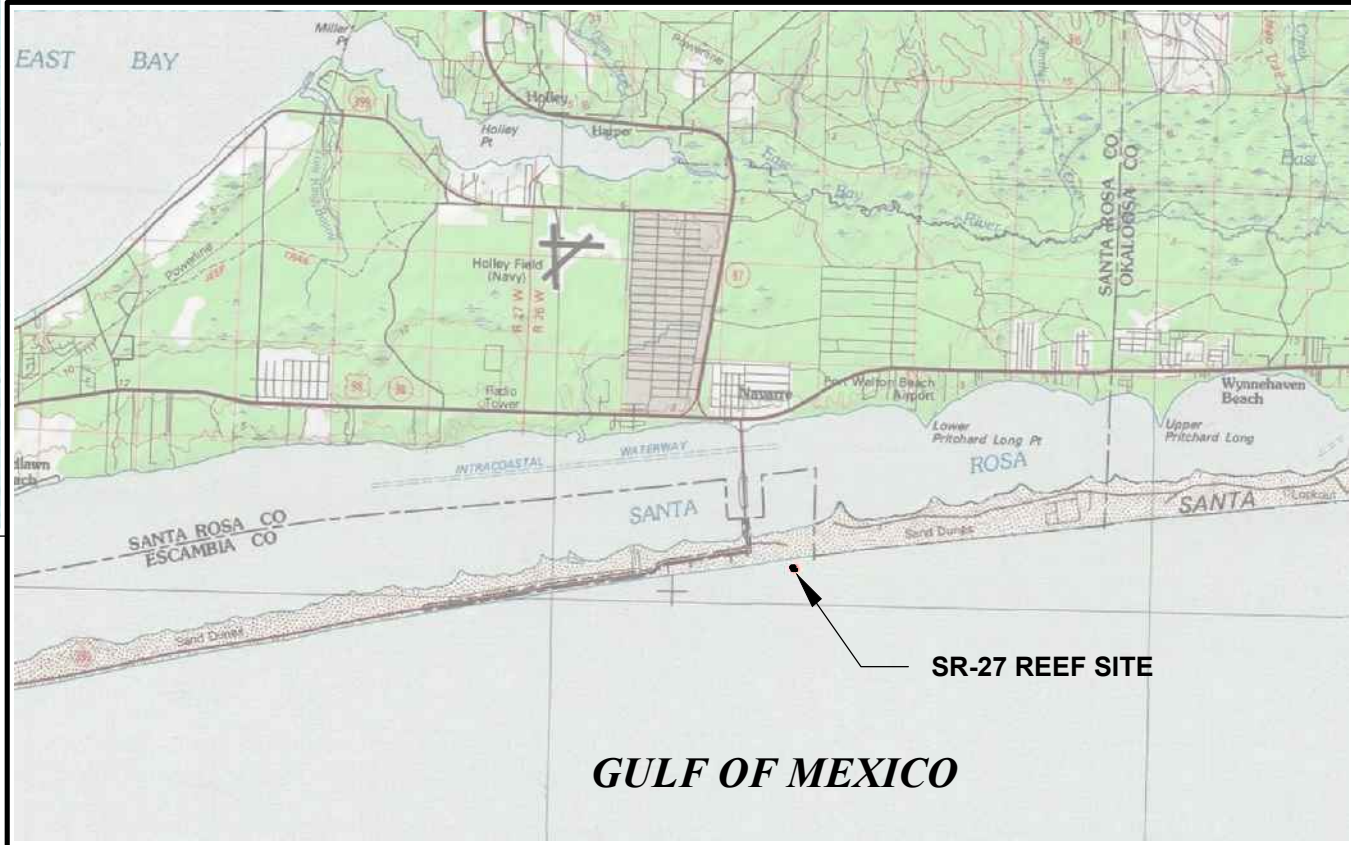
DRAWING INDEX

- C-1 TITLE SHEET
- C-2 PROJECT OVERVIEW
- C-3 SITE OVERVIEW
- C-4 SITE PLAN
- C-5 PATCH REEF PLANS AND TABLES
- C-6 PATCH REEF PLANS AND TABLES
- C-7 PATCH REEF PLANS AND TABLES
- C-8 PATCH REEF PLANS AND TABLES
- C-9 PATCH REEF PLANS AND TABLES
- C-10 PATCH REEF PLANS AND TABLES
- C-11 PATCH REEF PLANS AND TABLES
- C-12 PATCH REEF PLANS AND TABLES
- C-13 MODULE QUANTITIES AND RESOURCE LOCATIONS



VICINITY MAP

1"= 5 MILES (22x34)
1"= 10 MILES (11x17)



1"= 2 MILES (22x34)
1"= 4 MILES (11x17)

REFERENCE:
USGS 30X60 QUADRANGLE MAP,
NAVARRE, FLORIDA 1978
TOWNSHIP:02S, SECTION: 26W, RANGE: 27

LOCATION MAP

N.T.S.

OWNER CONTACT INFO
SANTA ROSA COUNTY BOARD OF COUNTY COMMISSIONERS
6495 CAROLINE STREET, SUITE M
MILTON, FL 32570
(850) 983-1877

ENGINEER CONTACT INFORMATION
MATTHEW A. TRAMMELL, P.E.
TAYLOR ENGINEERING, INC.
4300 LEGENDARY DRIVE, SUITE C246
DESTIN, FLORIDA 32541
(850) 460-7040
(850) 375-8651

SUNSHINE STATE ONE CALL OF
FLORIDA
SUNSHINE 811 - ALWAYS CALL 811
BEFORE YOU DIG
1-800-638-4097



TAYLOR ENGINEERING INC.
4300 LEGENDARY DRIVE
SUITE C246
DESTIN, FLORIDA 32541
(850)-460-7040
10151 DEERWOOD PARK BLVD
BLDG 300, SUITE 300
JACKSONVILLE, FLORIDA 32256
(904)-731-7040
CERTIFICATE OF AUTHORIZATION # 4815

PROJECT TITLE
**SR-27 ARTIFICIAL REEF
CONSTRUCTION PROJECT**
FWC GRANT #15154
SANTA ROSA COUNTY, FLORIDA

PROJECT NO	C2017-006
DATE	MARCH 2018

SEAL

MATTHEW TRAMMELL P.E.# 69244

C-1
SHEET 1 OF 13

ANTON FLEWELLING, 9/15/2018 6:37:56 PM, X:\lays\Projects\2017\006_SantaRosaCo_Reefs_SR-27\Construction\2017\006-C-Title.dwg

